

~ PIC 16F1455 Breakout Board Rev A Assembly Instructions

The assembly is straightforward. Use standard through-hole soldering techniques to install the components in any order desired on the top side of the PCB. Make sure to insert U1 in the proper orientation (match the notch to the one on the board).

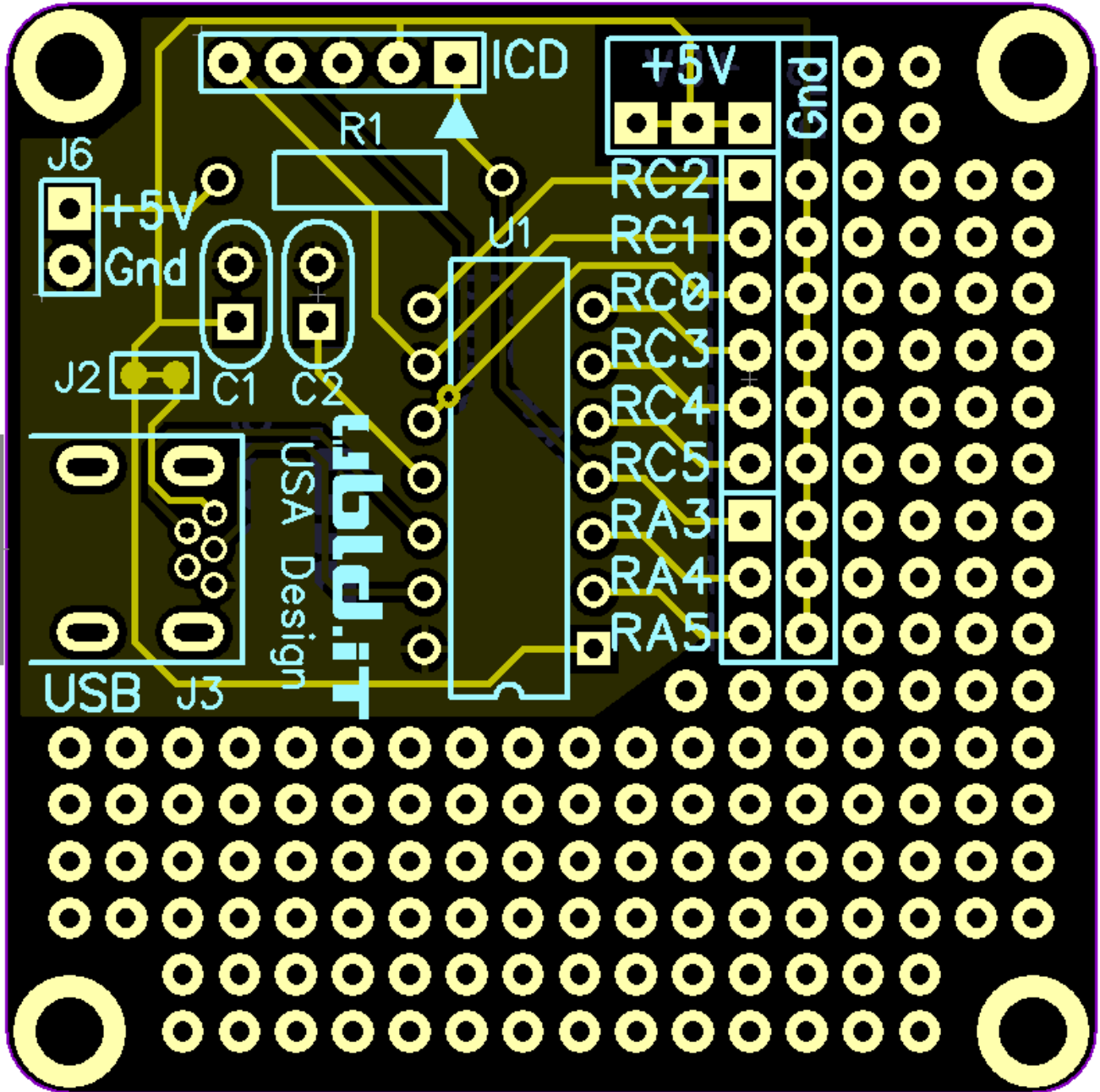
Notes:

The USB Breakout Board is set up to be USB BUS powered. If you want to use external power, populate J6 with a 2 pin .1" header to apply external power and cut the J2 trace. This will disconnect the USB 5V from the rest of the circuit.

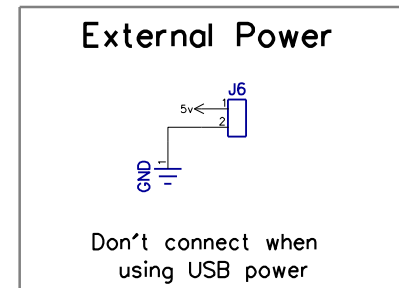
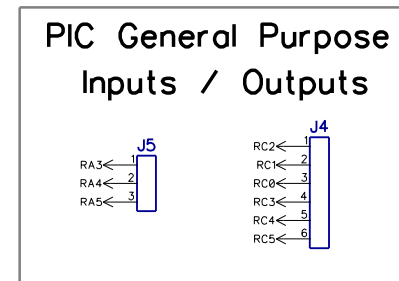
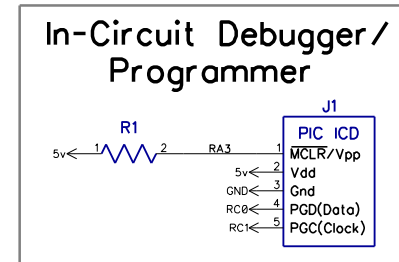
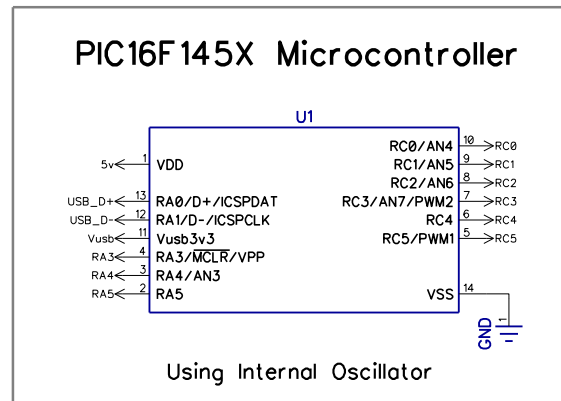
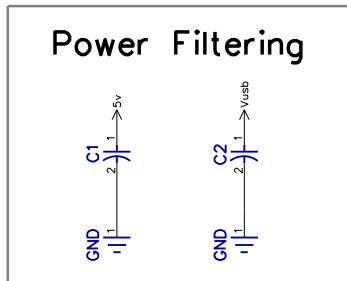
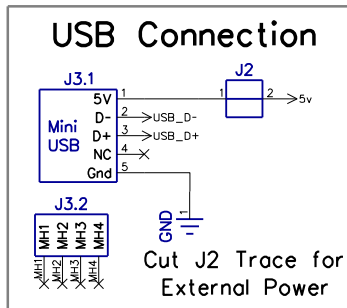
Parts List:

Quantity	Designation	Description	Image
2	C1, C2	0.33uF 50V Ceramic Disc Capacitor 10% (.1" lead spacing)	
1	J1	Right Angle Header, .1" x 5 pins	
1	J3	Mini USB-B Right Angle TH Female (Wurth 651005136521)	
1	R1	10k 1/4W Resistor 5%	
1	U1	PIC16F1455I/P Microcontroller	

PCB Layout showing parts placement



PIC16F145X USB Breakout Board



Bare PCBs and Kits Available at
<http://ubld.it>

ubld.it

PIC16F145X USB BB		
ubld electronics		A
3/2/14	Chris K Cockrum	Sheet 1